

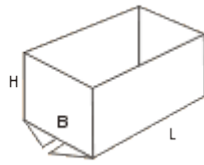
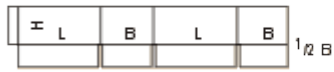
Что такое FEFCO

Гофротара — самая распространённая транспортная картонная тара. В странах Европейского экономического союза (ЕЭС) стандартом считаются конструкции гофрокоробов, разработанные Союзом европейских изготовителей тары из клееного плотного (FEFCO) и гофрированного (ASSCO) картона. Каждой конструкции в системе FEFCO—ASSCO присвоен идентификатор, который может использоваться непосредственно при заказе.

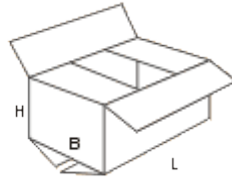
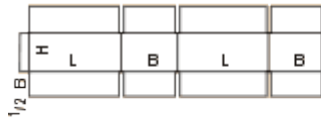
- **02xx** — складные гофрокороба упрощенной конструкции, выполненные из одной с клапанами крышки и дна, с боковым швом, при скреплении которого клеем, скобами или липкой лентой образуется боковая обечайка.
- **03xx** — телескопические гофрокороба с отдельным корпусом и крышкой, причем крышка по высоте закрывает корпус.
- **04xx** — оберточные коробки и большинство штампованных коробов, собираемые с помощью язычковых соединений без клея, скоб, липких лент и других вспомогательных материалов.
- **05xx** — коробки собираемые с помощью скоб, лент, клея из деталей типа рамы, а так же отдельные детали типа рамы (остова) для других типов ящиков.
- **06xx** — гофрокороба собираемые с помощью скоб, лент, клея из двух отдельных торцевых частей и соединяющих их обечайки.
- **07xx** — готовые, собранные в основном из одной детали складные гофрокороба.
- **09xx** - внутренние элементы ящика: прокладки, решетки, вкладыши дна, перегородки и т.п.

Каталог FEFCO используется производителями упаковки как отраслевое справочное пособие для всех видов работ по изготовлению упаковки из гофрокартона.

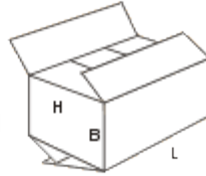
0200



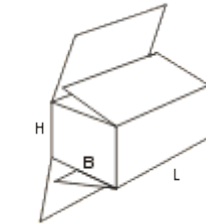
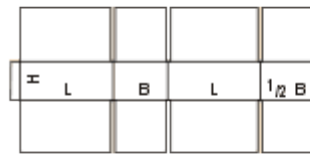
0201



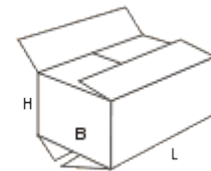
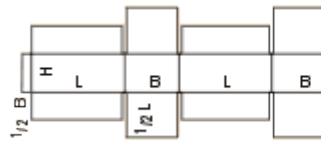
0202



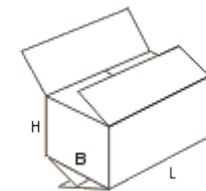
0203



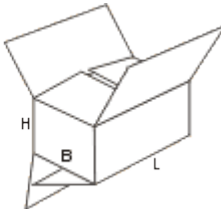
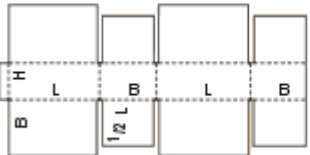
0204



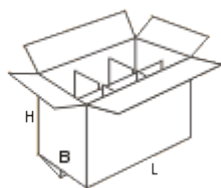
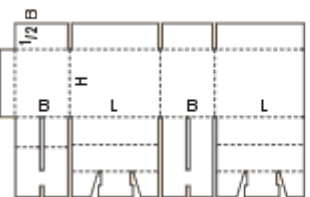
0205



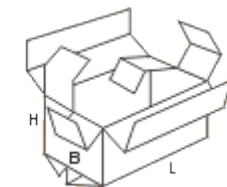
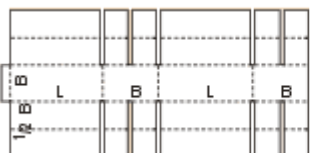
0206



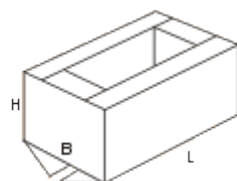
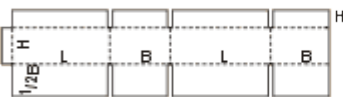
0207



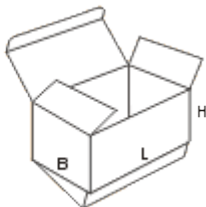
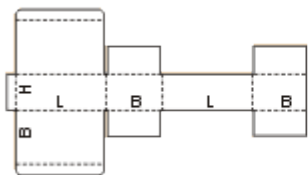
0208



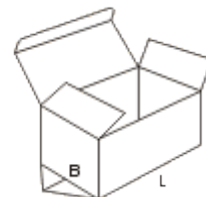
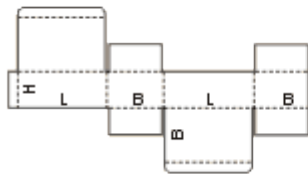
0209



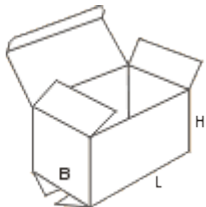
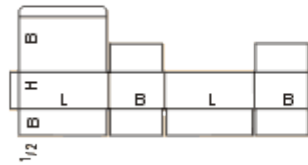
0210



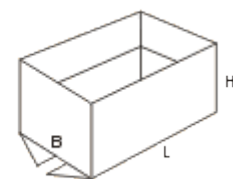
0211



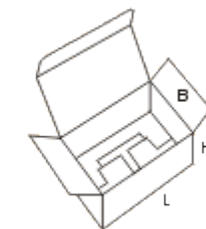
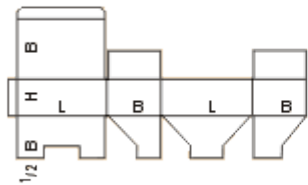
0212



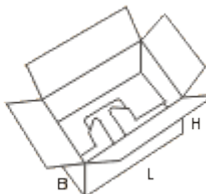
0214



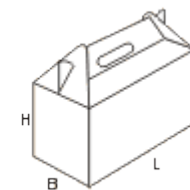
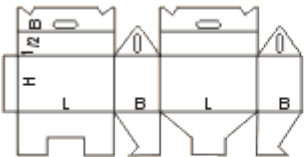
0215



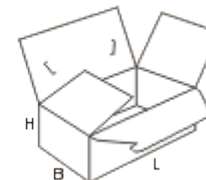
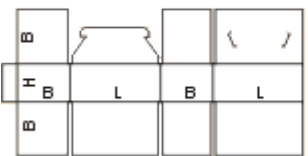
0216



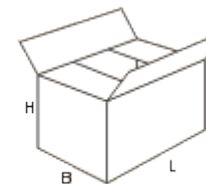
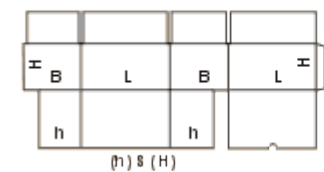
0217



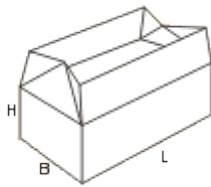
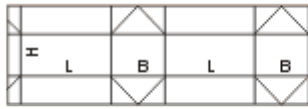
0218



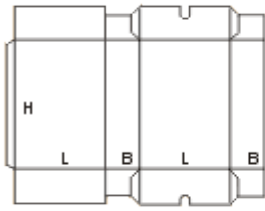
0225



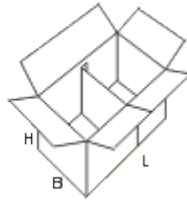
0226



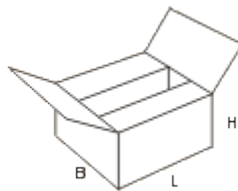
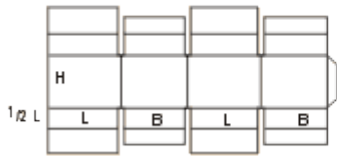
0227



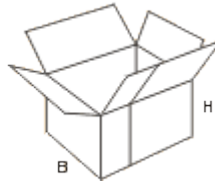
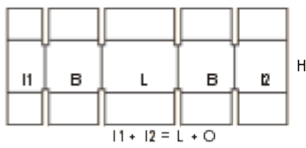
0228



0229

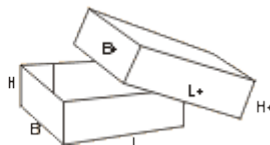
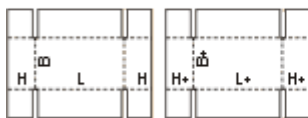


0230

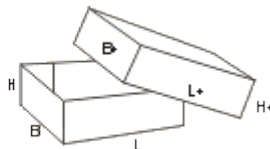


Гофрокороба сложной высадки (коды 03xx)

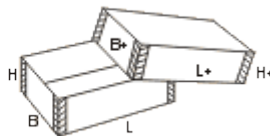
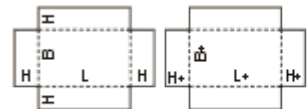
0300



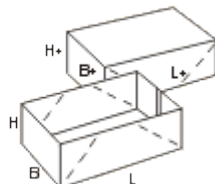
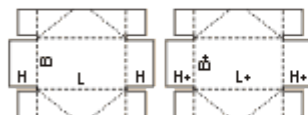
0301



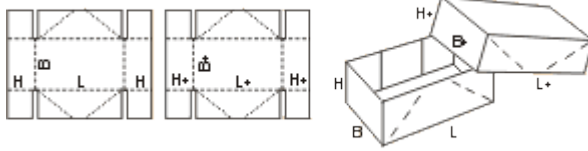
0302



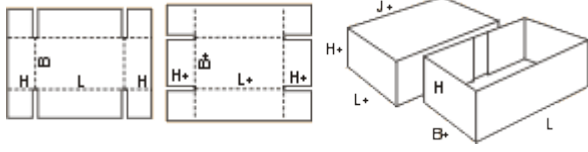
0303



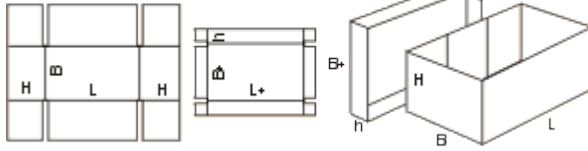
0304



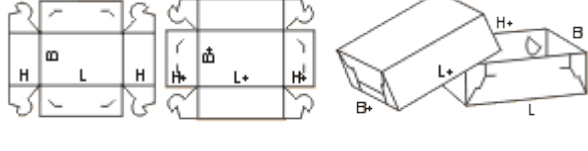
0305



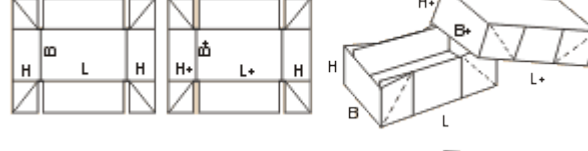
0306



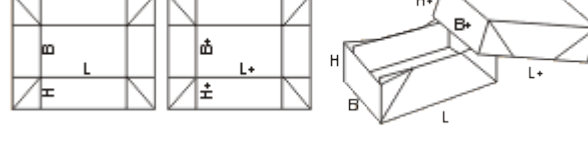
0307



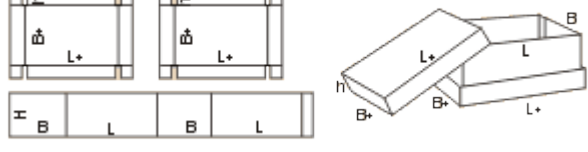
0308



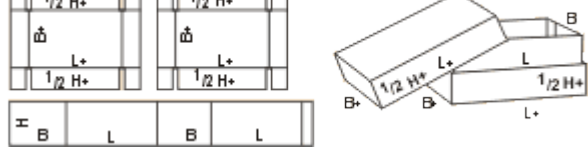
0309



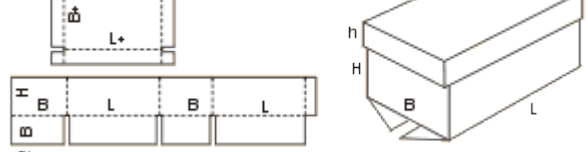
0310



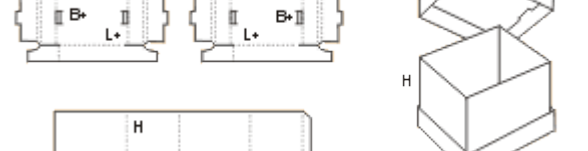
0311



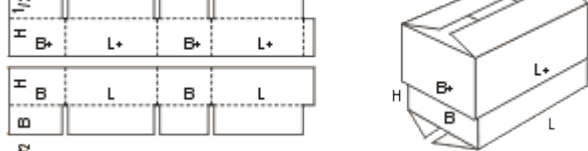
0312



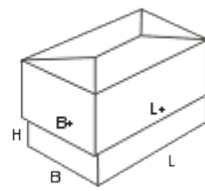
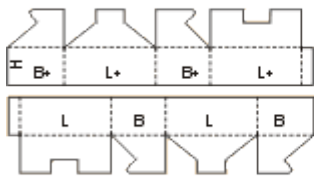
0314



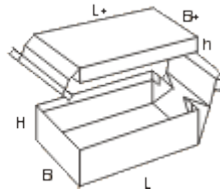
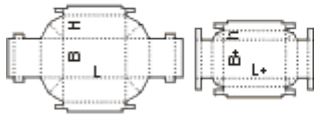
0320



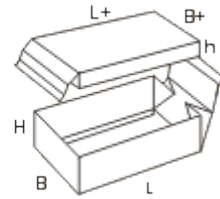
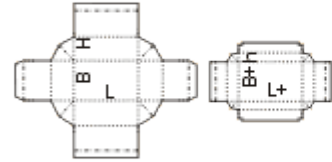
0321



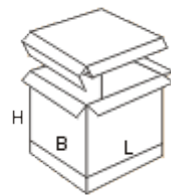
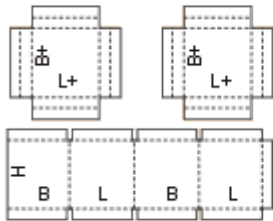
0322



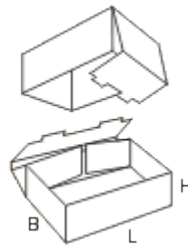
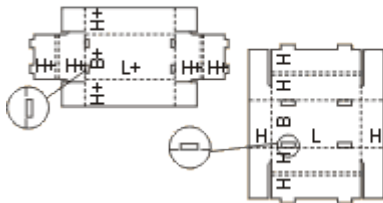
0323



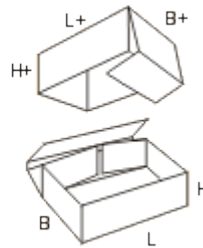
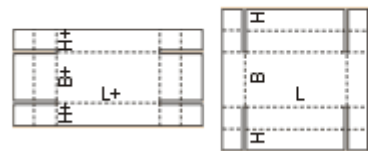
0325



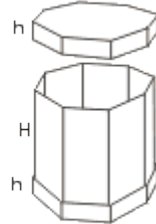
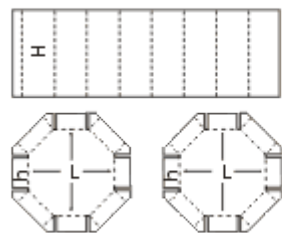
0330



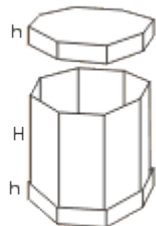
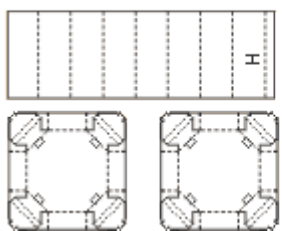
0331



0350

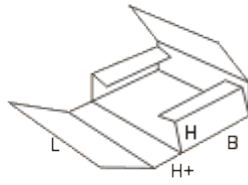
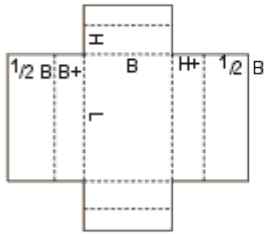


0351

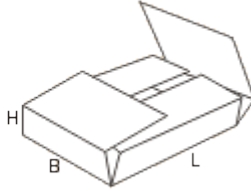
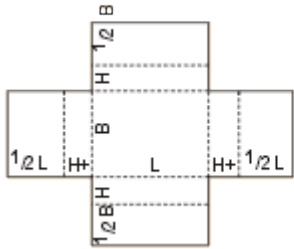


Гофрокороба сложной высадки (коды 04xx)

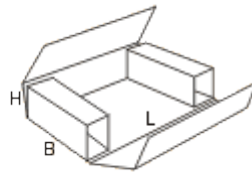
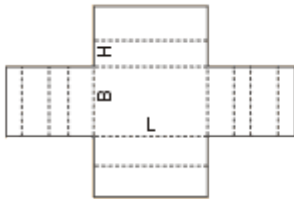
0401



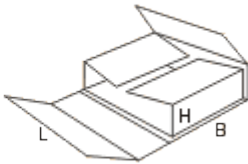
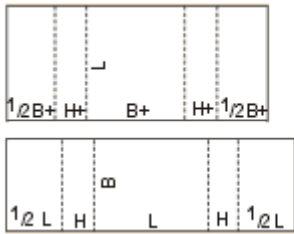
0402



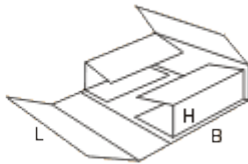
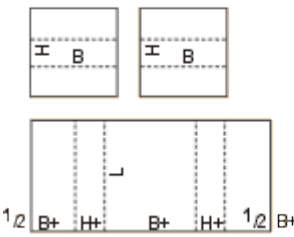
0403



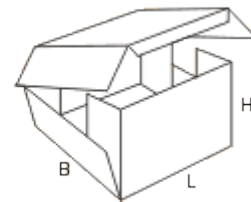
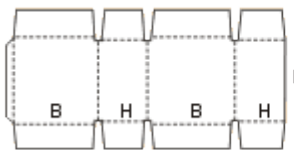
0404



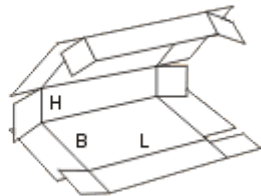
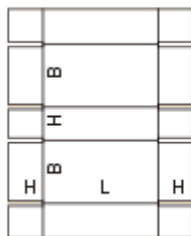
0405



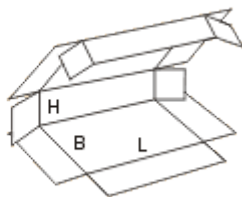
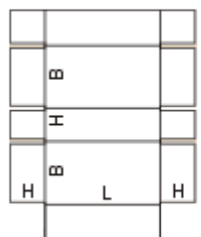
0406



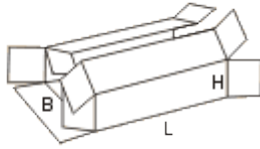
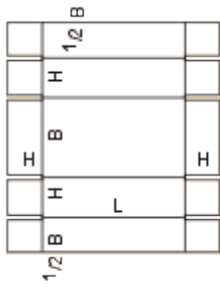
0409



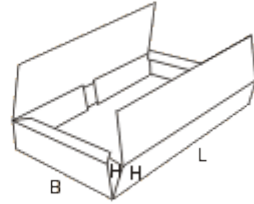
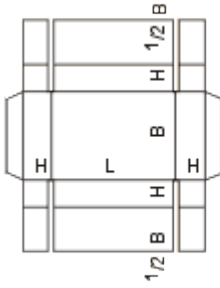
0410



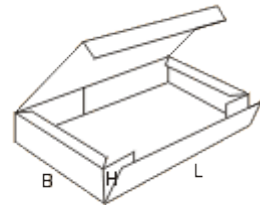
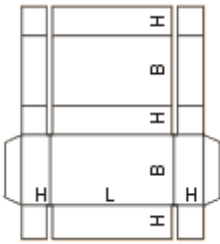
0411



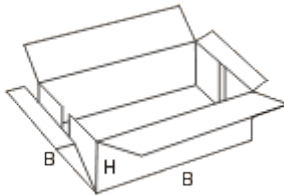
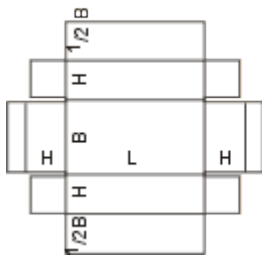
0412



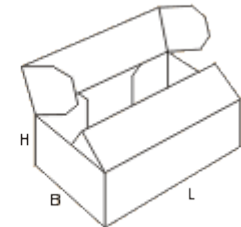
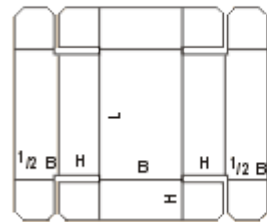
0413



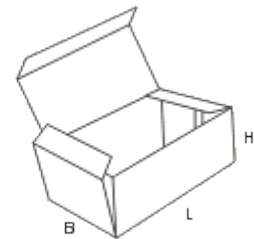
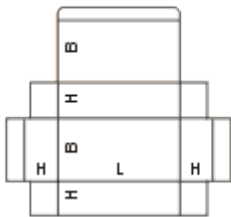
0415



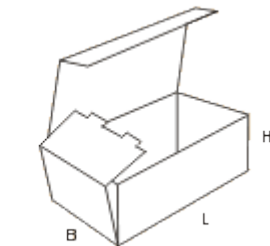
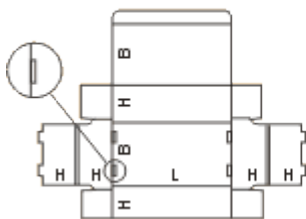
0416



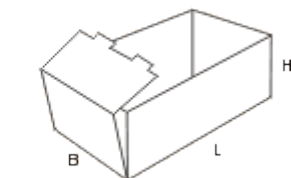
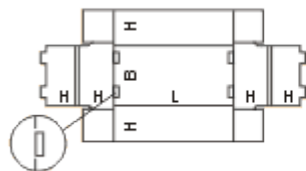
0420



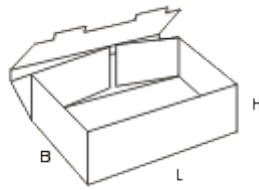
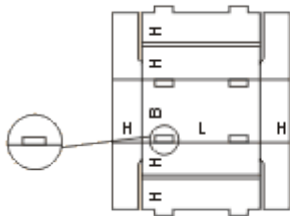
0421



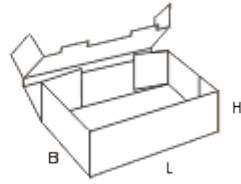
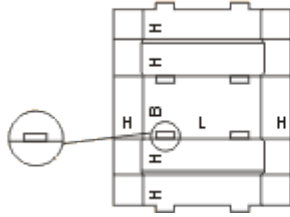
0422



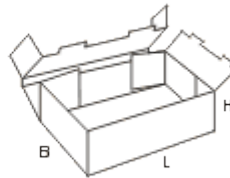
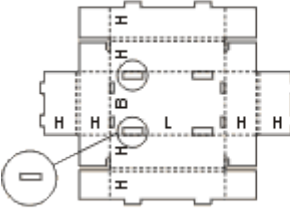
0423



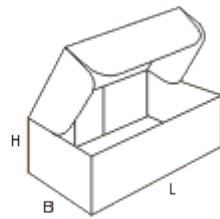
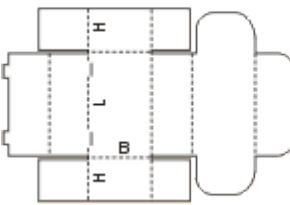
0424



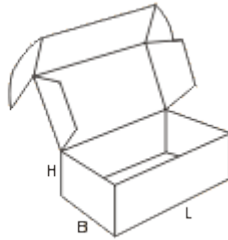
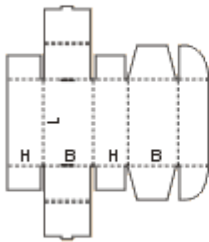
0425



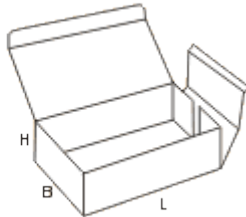
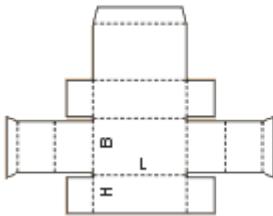
0426



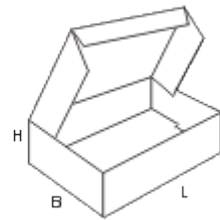
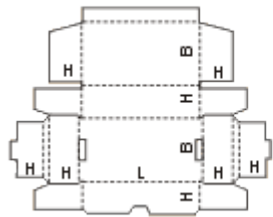
0427



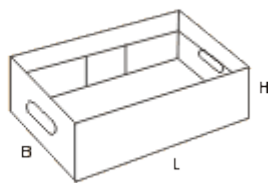
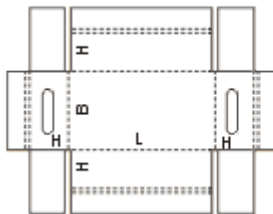
0428



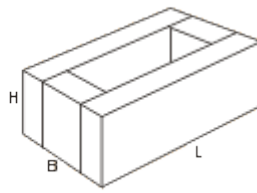
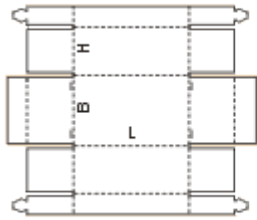
0429



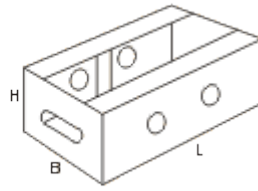
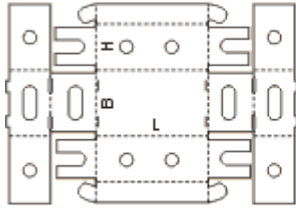
0430



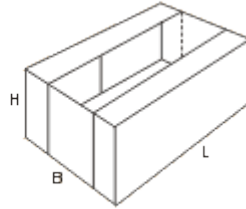
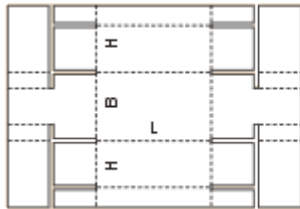
0431



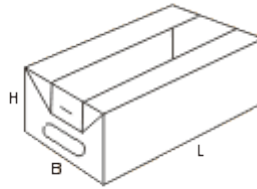
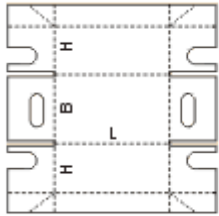
0432



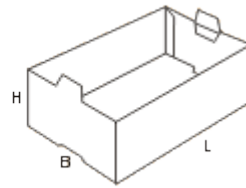
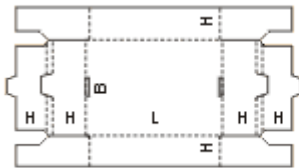
0433



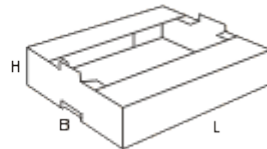
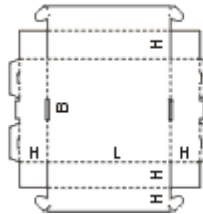
0434



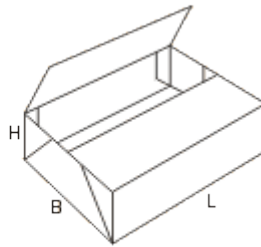
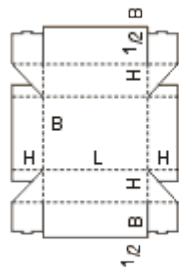
0435



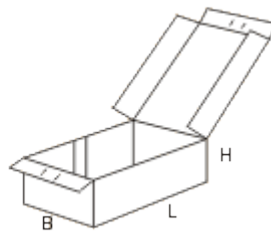
0436



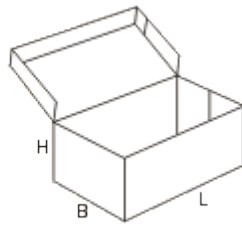
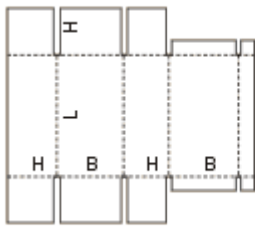
0437



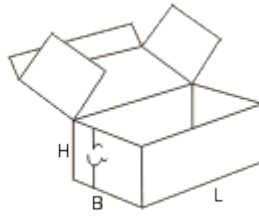
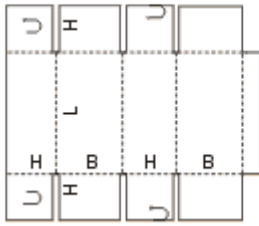
0440



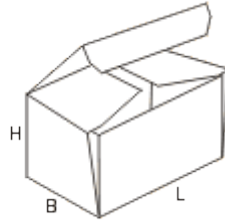
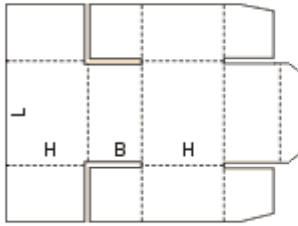
0441



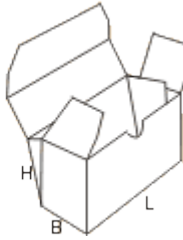
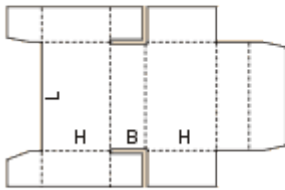
0442



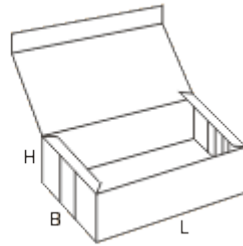
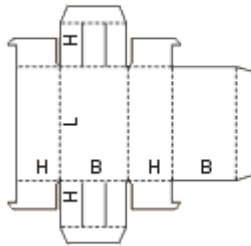
0443



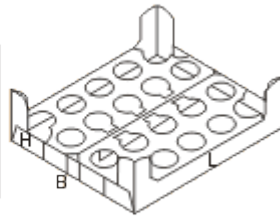
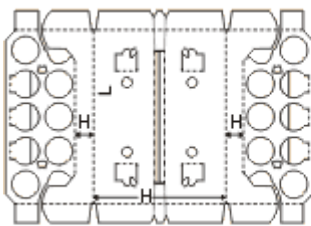
0444



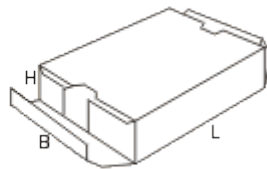
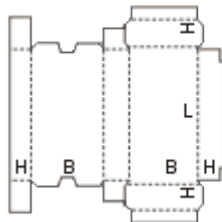
0445



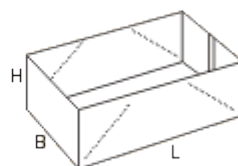
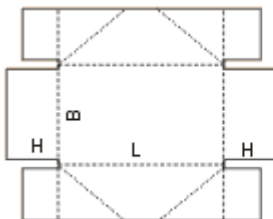
0446



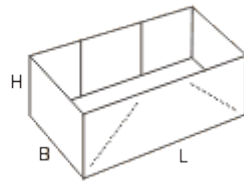
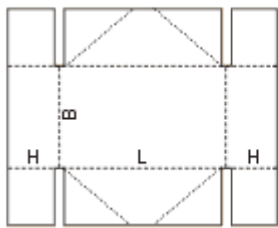
0447



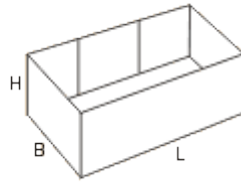
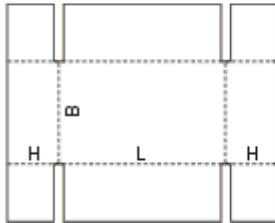
0450



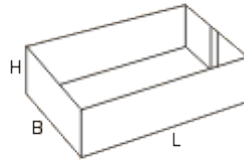
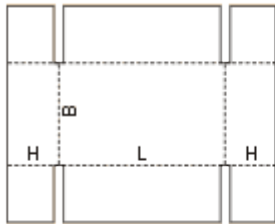
0451



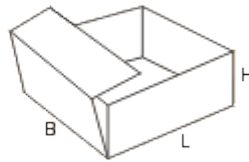
0452



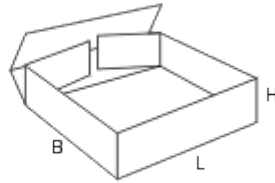
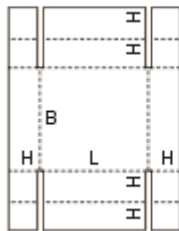
0453



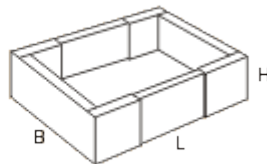
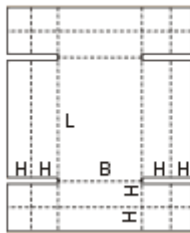
0454



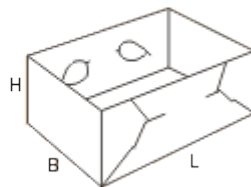
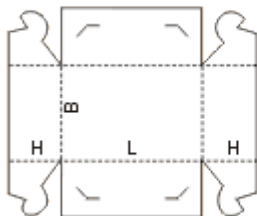
0455



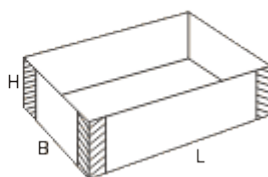
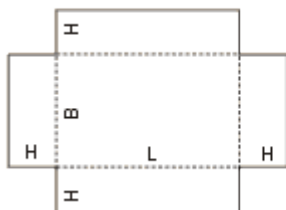
0456



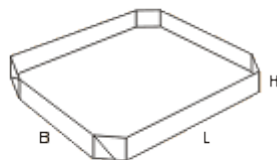
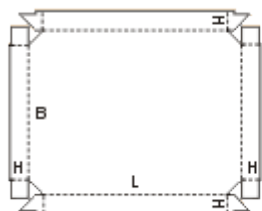
0457



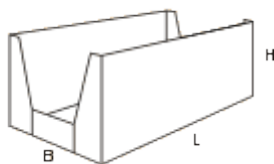
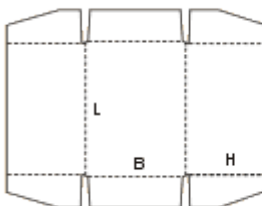
0458



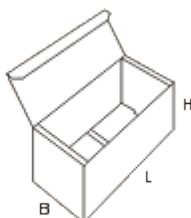
0459



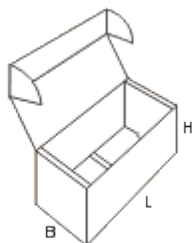
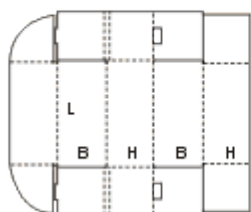
0460



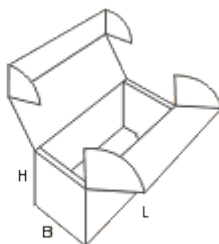
0470



0471

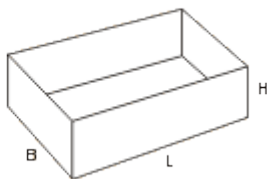
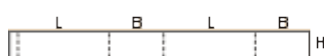


0472

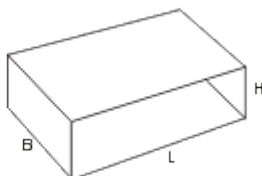
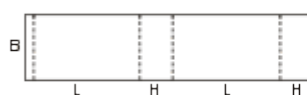


Гофрокороба сложной высадки (коды 05xx)

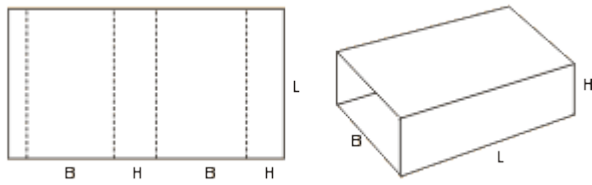
0501



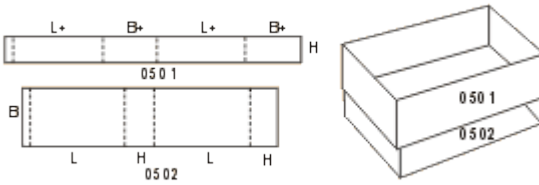
0502



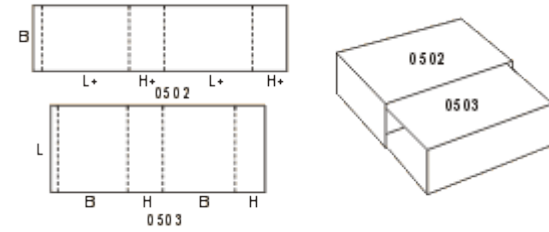
0503



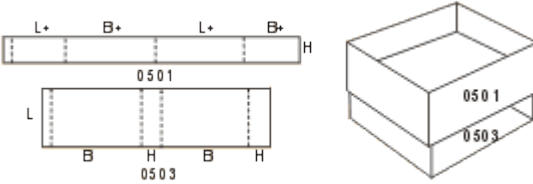
0504



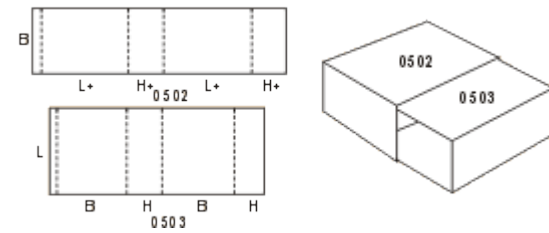
0505



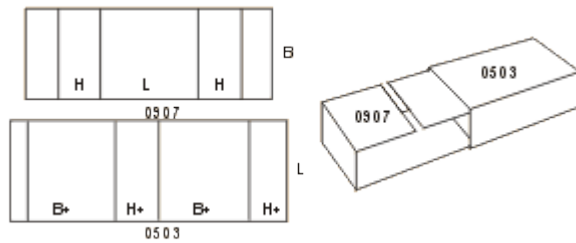
0507



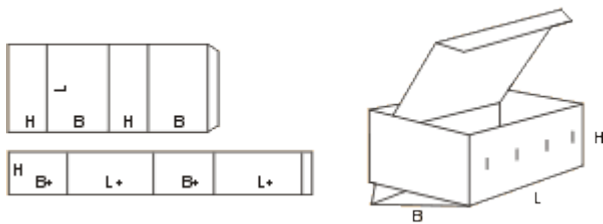
0508



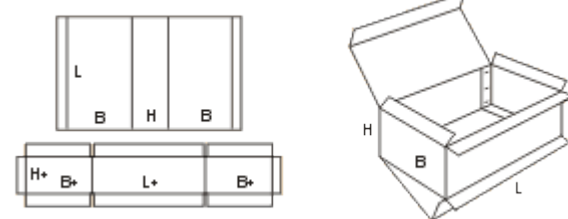
0509



0510

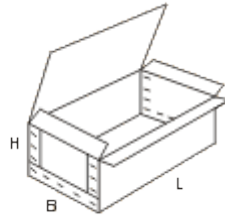
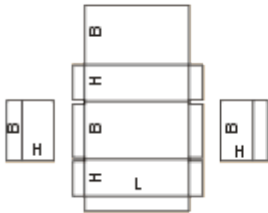


0512

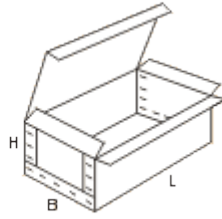
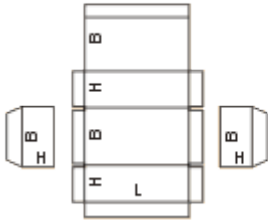


Гофрокороба сложной высадки (коды 06xx)

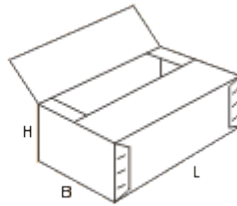
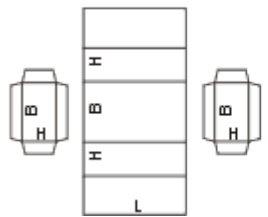
0601



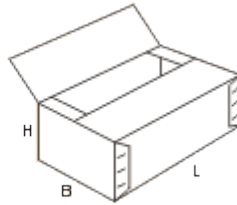
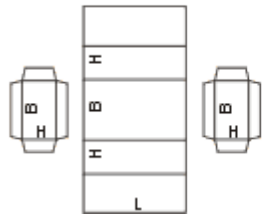
0602



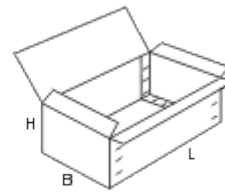
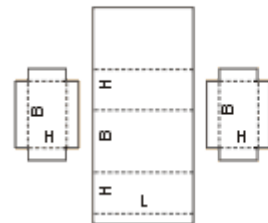
0605



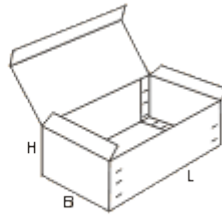
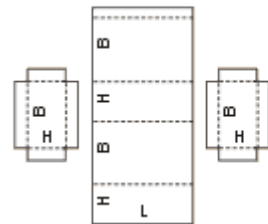
0606



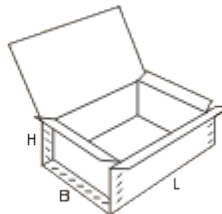
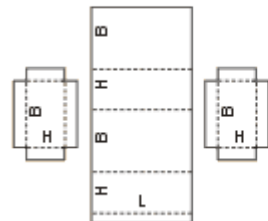
0607



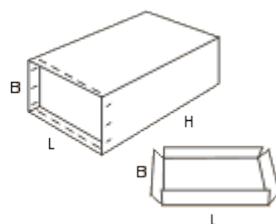
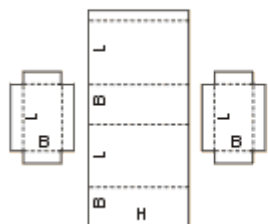
0608



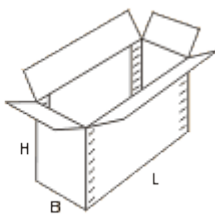
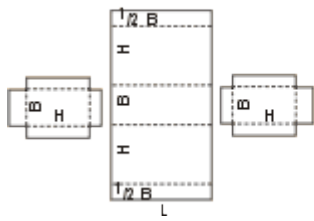
0610



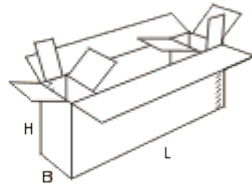
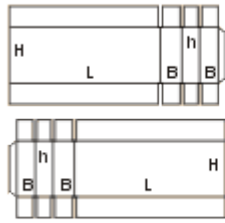
0616



0620

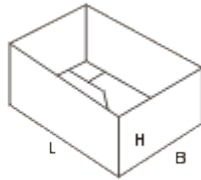


0621

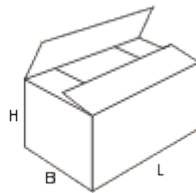
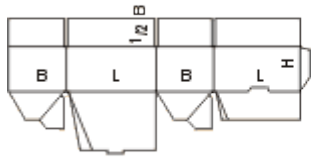


Гофрокороба сложной высадки (коды 07xx)

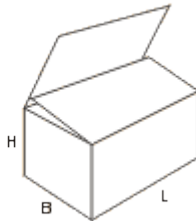
0700



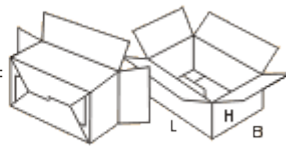
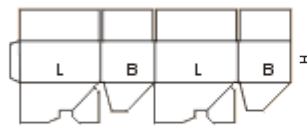
0701



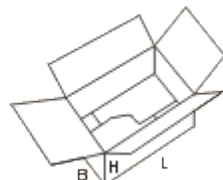
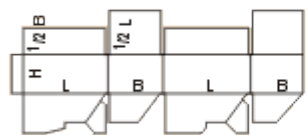
0705



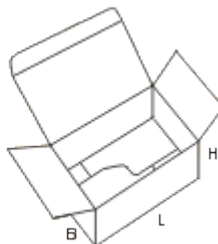
0711



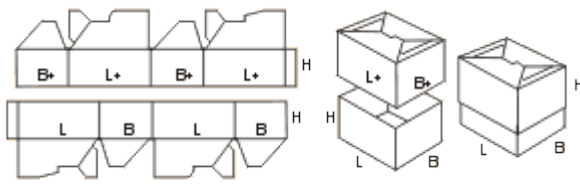
0712



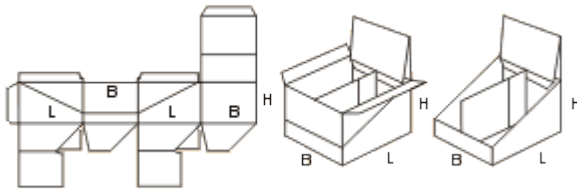
0713



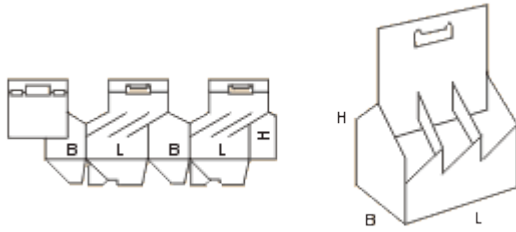
0714



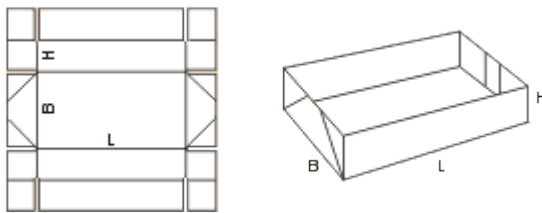
0716



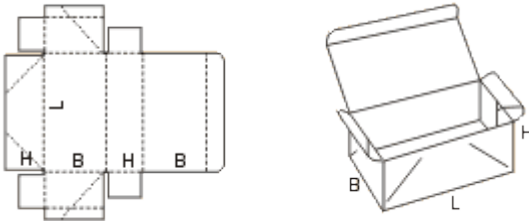
0717



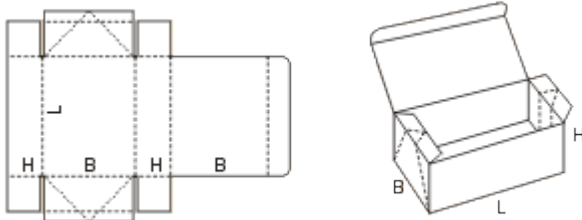
0718



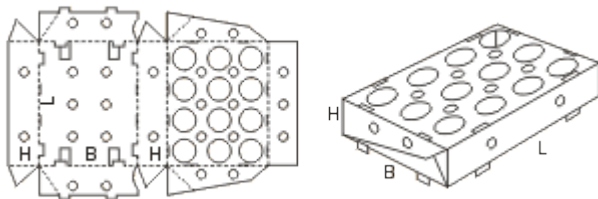
0747



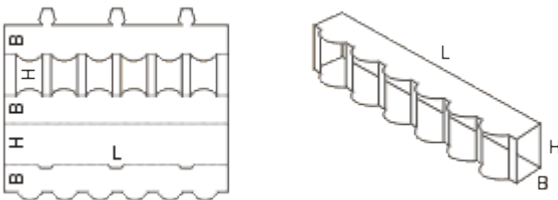
0748



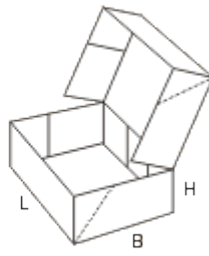
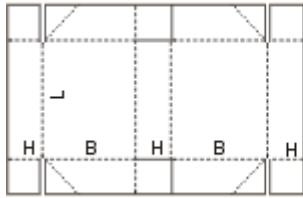
0751



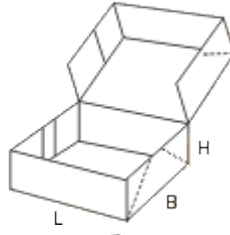
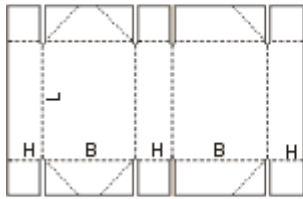
0752



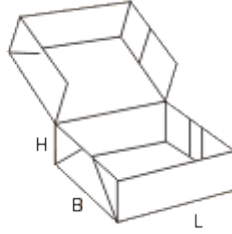
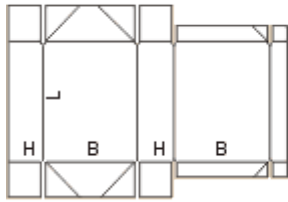
0759



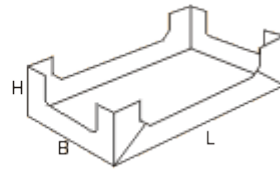
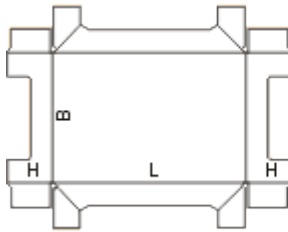
0760



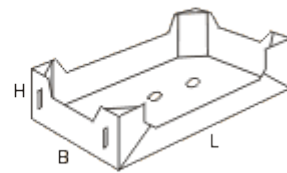
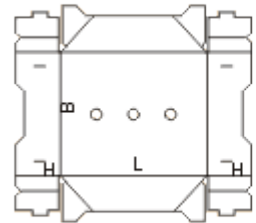
0761



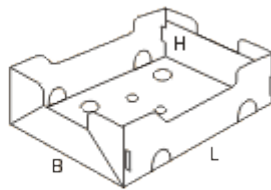
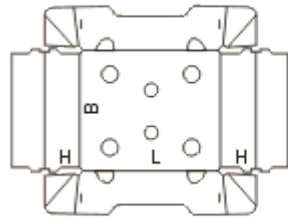
0770



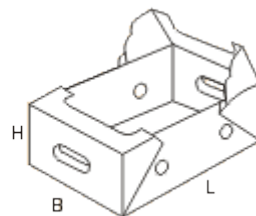
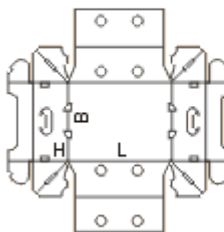
0771



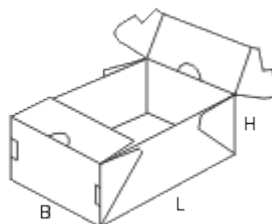
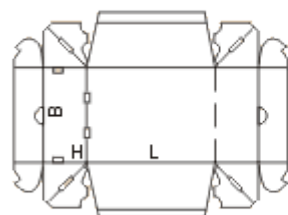
0772



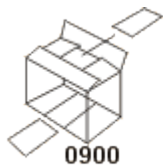
0774



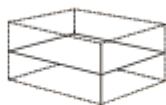
0775



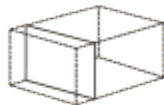
Гофрокороба сложной высадки (коды 09xx)



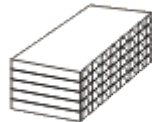
0900



0901



0902



0913



0966



0967



0940



0941



0942



0943



0944



0945



0946



0947



0948



0965



0910



0911



0970



0971



0972



0973



0974



0975



0976